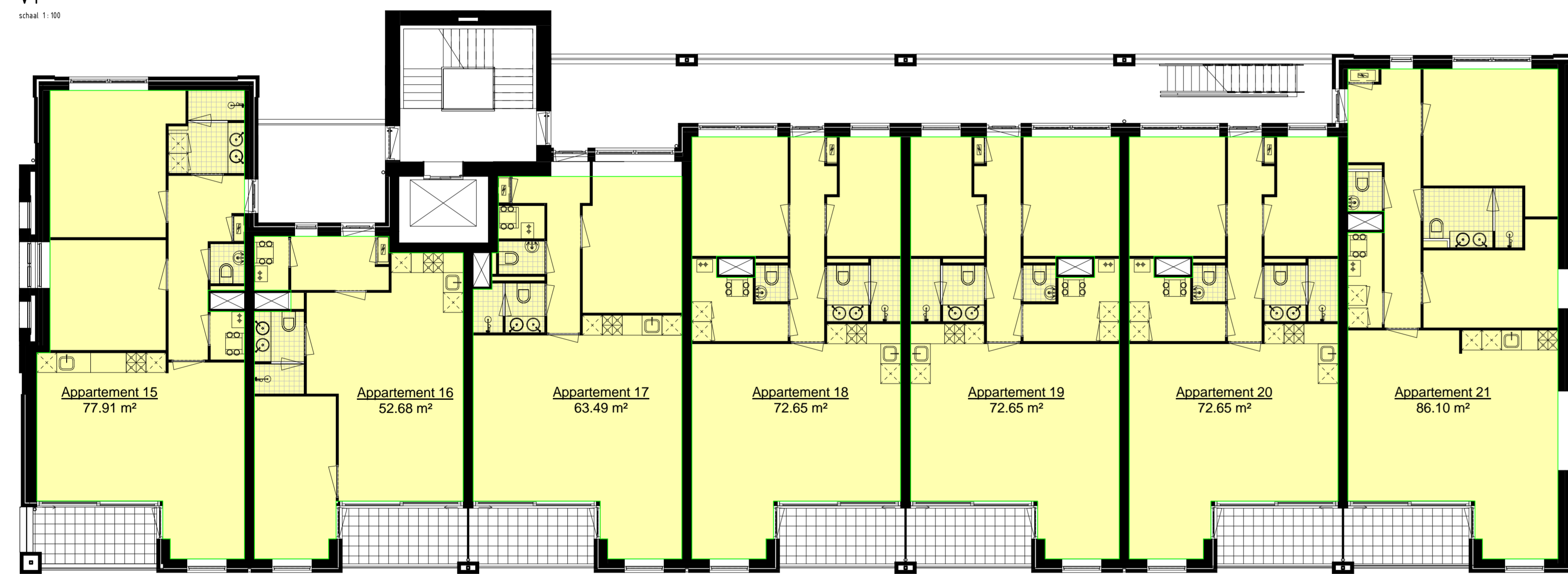




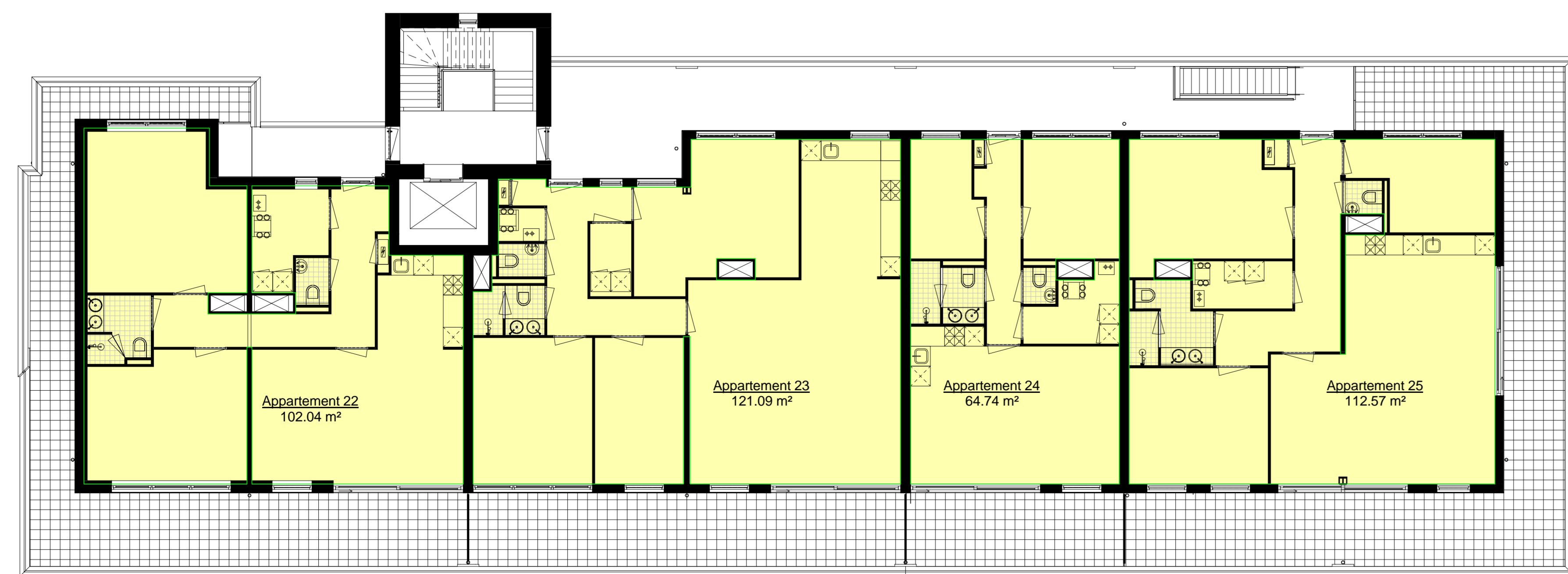
V0
schaal 1:100



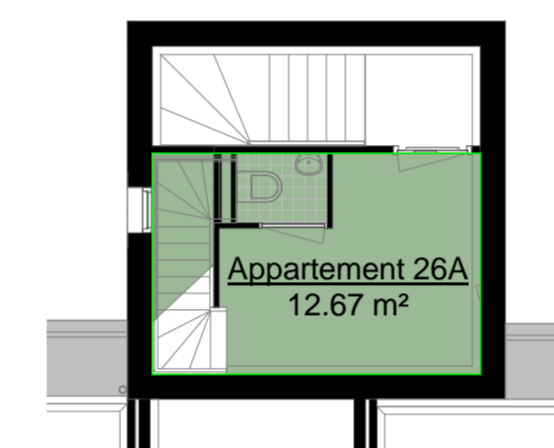
V1
schaal 1:100



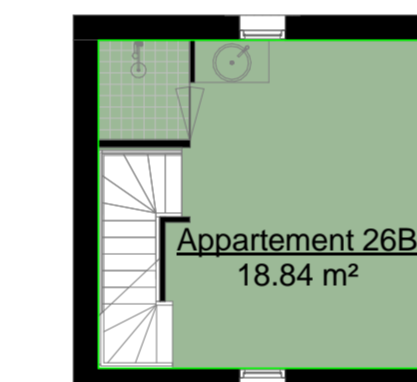
V2
schaal 1:100



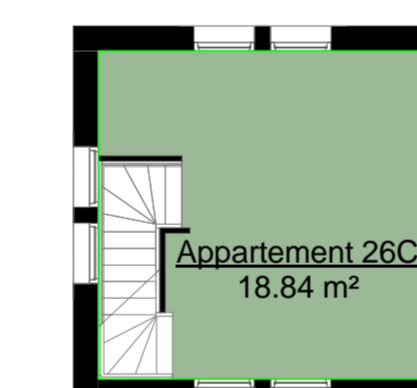
V3
schaal 1:100



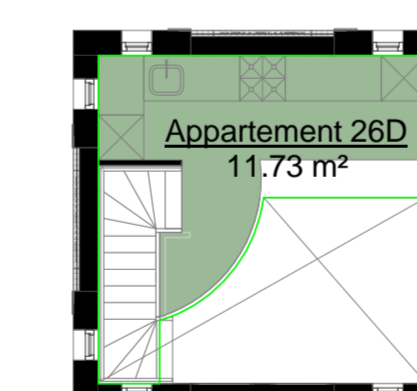
Toren verd A
schaal 1:100



Toren verd B
schaal 1:100



Toren verd C
schaal 1:100



Toren verd D
schaal 1:100

Area Schedule (GO)		
Level	Naam	GO
V0	Appartement 1	78 m²
V0	Appartement 2	53 m²
V0	Appartement 3	63 m²
V0	Appartement 4	73 m²
V0	Appartement 5	73 m²
V0	Appartement 6	73 m²
V0	Appartement 7	86 m²
		498 m²
V1	Appartement 8	78 m²
V1	Appartement 9	53 m²
V1	Appartement 10	63 m²
V1	Appartement 11	73 m²
V1	Appartement 12	73 m²
V1	Appartement 13	73 m²
V1	Appartement 14	86 m²
		498 m²
V2	Appartement 15	78 m²
V2	Appartement 16	53 m²
V2	Appartement 17	63 m²
V2	Appartement 18	73 m²
V2	Appartement 19	73 m²
V2	Appartement 20	73 m²
V2	Appartement 21	86 m²
		498 m²
V3	Appartement 22	102 m²
V3	Appartement 23	121 m²
V3	Appartement 24	65 m²
V3	Appartement 25	113 m²
		400 m²
Toren verd A	Appartement 26A	13 m²
		13 m²
Toren verd B	Appartement 26B	19 m²
		19 m²
Toren verd C	Appartement 26C	19 m²
		19 m²
Toren verd D	Appartement 26D	12 m²
		12 m²
		1957 m²

Alle maten in het werk controleren

Indiening

Nieuwbouw 26 appartementen Halfweg

Opdrachtgever: Badhoeve Bouw
GO oppervlaktes

sch. 1:100
form. A0
dat. 19-12-14
ont. P.z.
Werk: AH18
Blad: I-09

KIP
architecten 1/2 wg

Haarlemmerstraatweg 11b, 1165 MJ Halfweg
Postbus 115, 1160 AC Zwanenburg
T 020 624 35 16 F 020 620 64 19 E info@kiparchitecten.nl